



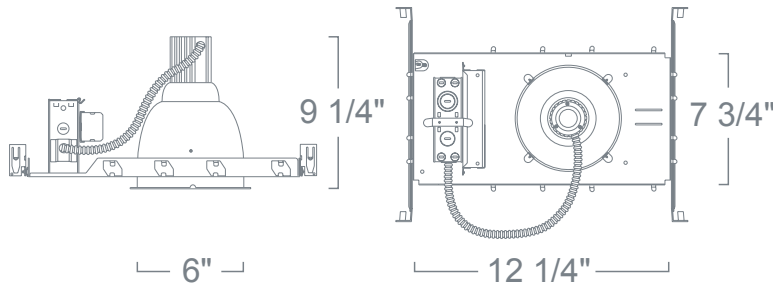
Type :

Project :

Catalog # :

LHM77 - LIGHT COMMERCIAL HOUSING

LHM77 SERIES - 6" LIGHT COMMERCIAL H.I.D. HOUSING



Pre-wired oversized junction box with knockouts and ground wire.
Architectural Hanger Bars sold separately.

FEATURE(S):



SPECIFICATION

Ceiling cut-out: 6 1/2"

H.I.D. 100W PAR30/ ED17 MED E26

Application: Light commercial recessed downlight housing for medium to high ceilings for commercial and high-end residential installations. A variety of compatible trim styles and finishes are available to achieve the proper illumination.

Housing & Mounting Frame: 18 gauge galvanized flat frame with powder coat finish for ceiling up to 1 1/4" thick. Supplied with (2) 24" adjustable bar hangers (90 degrees repositioning ability). Bar hangers equipped with (nail-less installation) 3/4" serrated barbed studs for secure mounting in wood joists. Can also be mounted to grid panel ceiling. Earthquake structural cable compatible for drop panel ceiling or any other mounting that requires direct support from structural ceilings.

Socket Cap: Extruded aluminum socket cap, 1 1/4" vertically adjustable socket arm with set screw which enables the use of multiple lamp types and repositioning to optimize lamp performance. Furnished with heat sink fins to vent lamp heat and extend lamp life. Accepts compatible reflector trims.

Socket: Pulse-Rated 4KV, standard porcelain medium screw base socket with high temperature leads and nickel-plated contacts.

Junction Box: 16 gauge pre-wired galvanized steel Junction Box, 32 cubic-inch for a maximum of (8) #12 AWG wires. Furnished with (6) 3/4" and (4) Romex knock-outs. Strain clamps to install or remove covers for easy access and ground wire. Equipped with safety standard fitting for flex-conduit.

Insulation Contact: Non IC rated housing must be kept 3" from insulation.

Safety Labels: ETL/CETL listed for through-branch wiring (8) No.12 AWG 90°C and suitable for damp locations. NYC approved: Calendar #41937.

Label: U.L. Listed, E.T.L. Listed

COMPATIBILITY

LR710 BAFFLE W/ EYELID WALL WASH	LR711 REFLECTOR	LR715 REFLECTOR W/ EYELID WALL WASH
LR717 OPEN REFLECTOR WALL WASH	LR718 CROSS BLADE REFLECTOR	

Note: Wattage limitations on compatible items must be met.

ORDERING

ORDERING EXAMPLE : LHM77050E-27

LHM77	WATTAGE	BALLAST
LHM77	039E :39W	Blank :Electronic(120V)
	050E :50W	-27 :Electronic (277V)
	070E :70W	
	100E :100W	